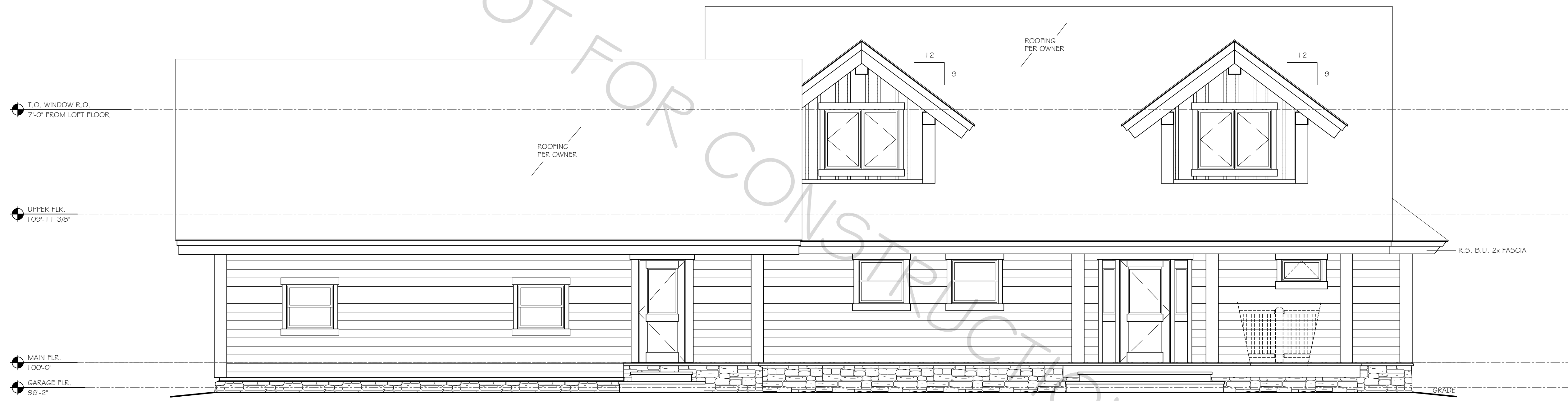


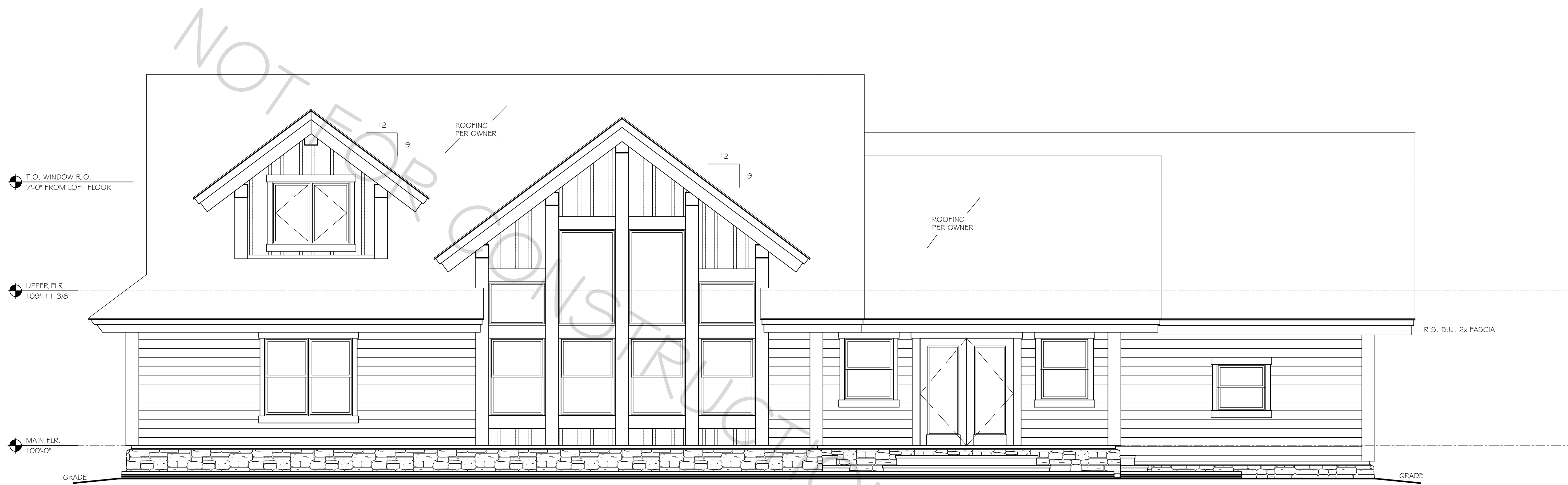


Whisper Creek

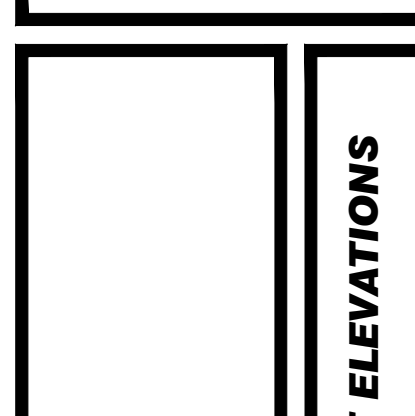
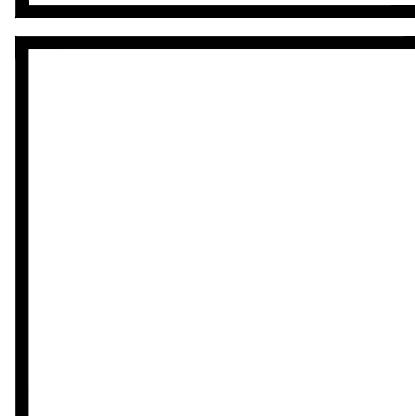
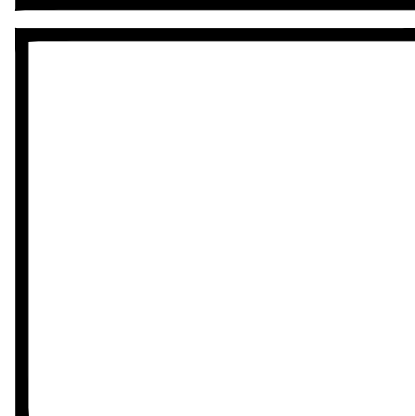
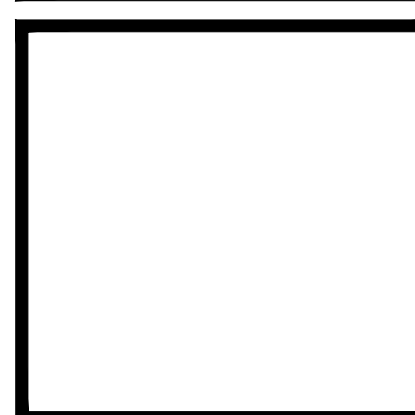
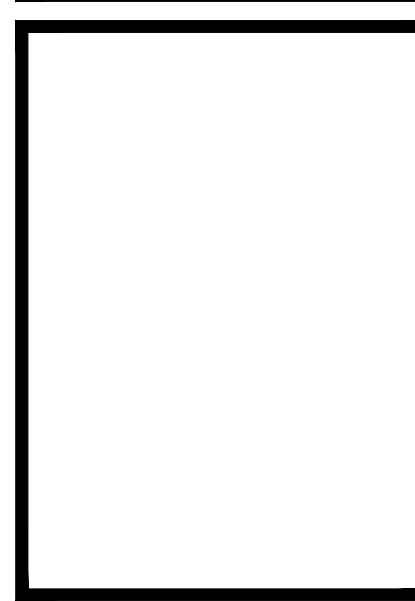
NOT FOR CONSTRUCTION



FRONT ELEVATION
SCALE: 1/4" = 1'-0"



REAR ELEVATION
SCALE: 1/4" = 1'-0"

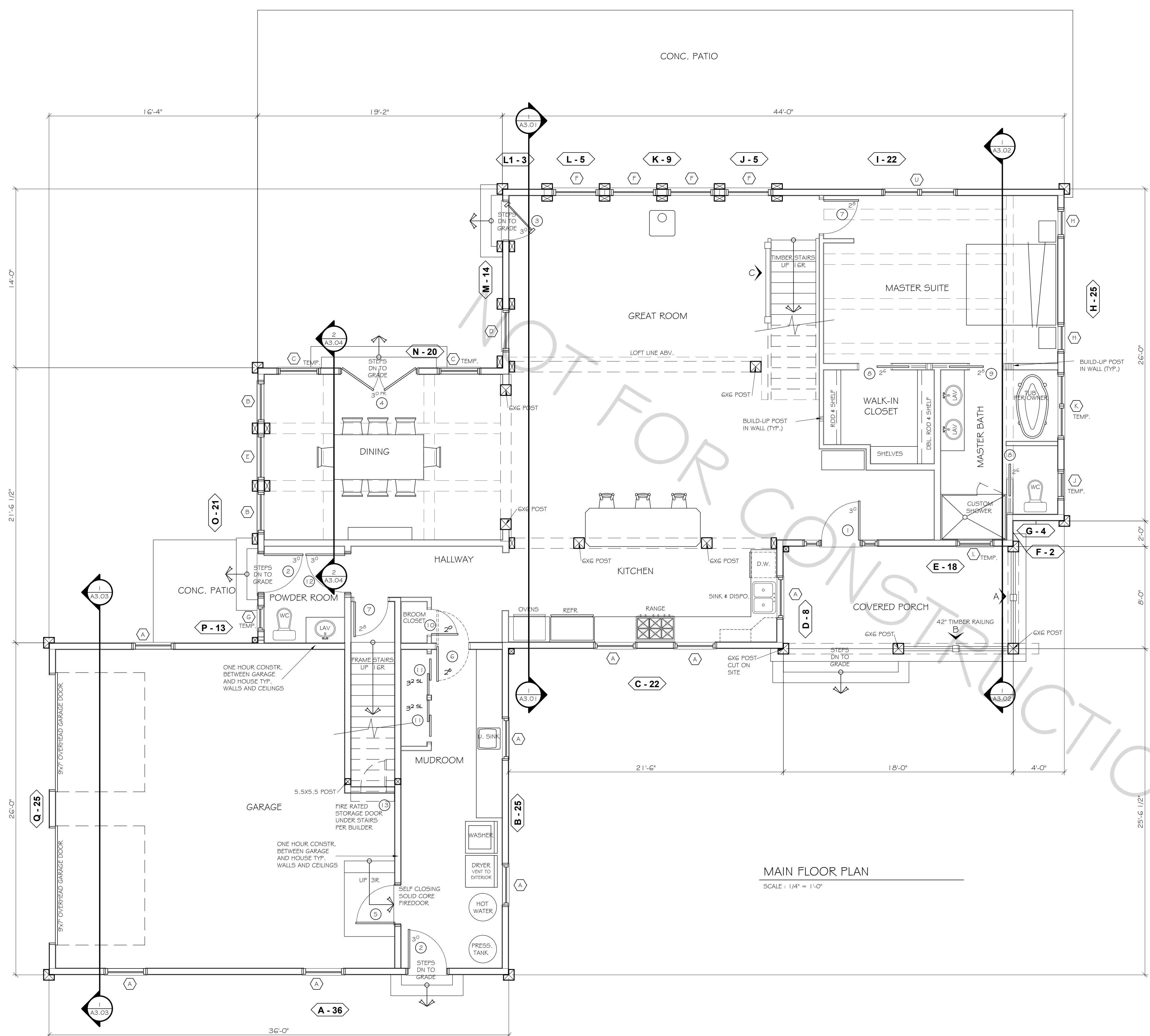


EXTERIOR RIGHT & LEFT ELEVATIONS

DRAWN BY:	CB / CF
CHECKED BY:	MANAGER
DATE:	12/7/15
REVISIONS	
REV.#1:	1/8/16 JP
REV.#2:	N/A
REV.#3:	N/A
REV.#4:	N/A
REV.#5:	N/A
REV.#6:	N/A

PROJECT NO:
#####

SHEET:
A2.02
EXTERIOR
ELEVATIONS
OF: 04



MAIN FLOOR PLAN
SCALE: 1/4" = 1'-0"

PELLA PROLINE 450 SERIES WINDOW SCHEDULE

QTY.	TYPE	ROUGH OPENING	CAT. NO.	JAMB	TEMP.	NOTES
A	8	DBLE HUNG 3'-1-3/4" x 2'-11-3/4"	3735	6-9/16"	-	
B	2	DBLE HUNG 3'-1-3/4" x 3'-11-3/4"	3747	6-9/16"	-	
C	2	DBLE HUNG 3'-1-3/4" x 3'-11-3/4"	3747	6-9/16"	YES	
D	1	DBLE HUNG 3'-1-3/4" x 4'-11-3/4"	3759	6-9/16"	-	
E	1	DBLE HUNG 3'-5-3/4" x 3'-11-3/4"	4147	6-9/16"	-	
F	4	DBLE HUNG 3'-5-3/4" x 4'-11-3/4"	4159	6-9/16"	-	
G	1	DBLE HUNG 1'-9-3/4" x 2'-11-3/4"	2135	6-9/16"	YES	
H	2	DBLE HUNG 2'-1-3/4" x 3'-11-3/4"	2547	6-9/16"	-	
J	1	DBLE HUNG 2'-1-3/4" x 3'-11-3/4"	2547	6-9/16"	YES	
K	1	2 WIDE DBL HNG	2947	6-9/16"	YES	
L	1	AWNING 2'-8-3/4" x 1'-5-3/4"	3217	6-9/16"	YES	OBSCURE GLASS
M	1	AWNING 1'-11-3/4" x 1'-11-3/4"	2323	6-9/16"	YES	
N	2	2 WIDE CSMT	2947 - L/R	6-9/16"	-	
P	1	2 WIDE CSMT	2947 - L/R	6-9/16"	YES	
Q	2	2 WIDE DBL HNG	3747	6-9/16"	-	
R	1	2 WIDE AWN	4129	6-9/16"	-	
S	2	FIXED 42" x 31-1/2"	----	6-9/16"	-	
T	2	FIXED 42" x 72"	----	6-9/16"	-	
U	1	2 WIDE DBL HNG	3759	6-9/16"	-	
V	1	AWNING 1'-11-3/4" x 1'-11-3/4"	2323	6-9/16"	YES	OBSCURE GLASS

KNOTTY ALDER EXTERIOR DOOR SCHEDULE 1

QTY.	SIZE	STYLE	CAT. NO.	JAMB	SWING	REMARKS
1	5'-8 1/4" x 6'-11 1/2"	CONT. HEAD & SILL UNIT	EAS08230 EAS0H	6-9/16"	RH	MULLED UNIT, SIDE LIGHTS
2	3'-2 1/4" x 6'-11 1/2"	SINGLE DOOR	EAS08230	6-9/16"	LH	

PELLA 450 SERIES EXTERIOR DOOR SCHEDULE 2

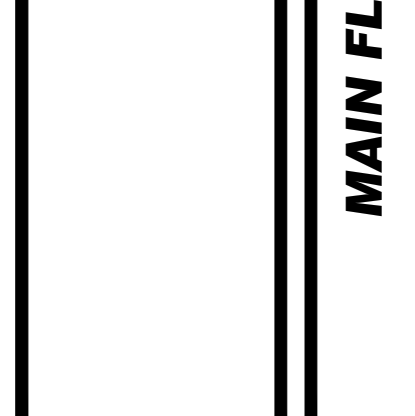
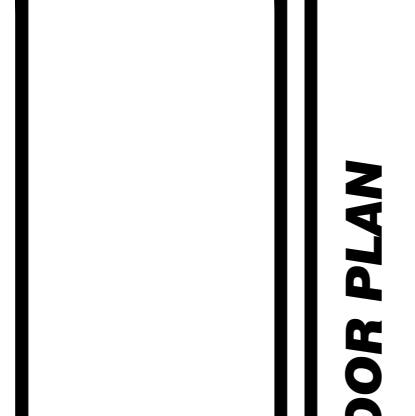
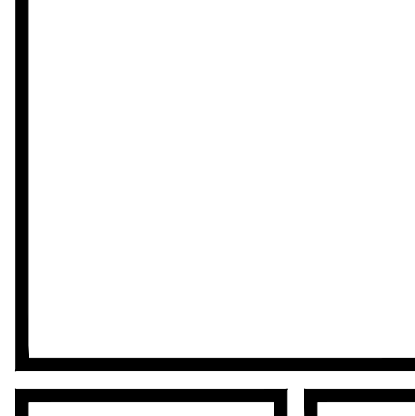
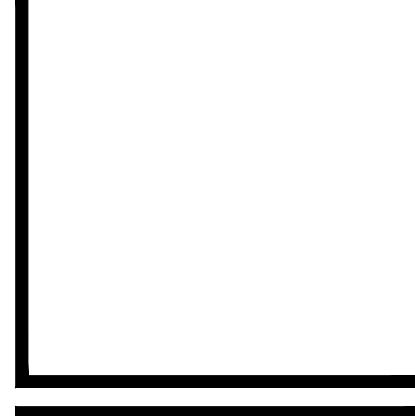
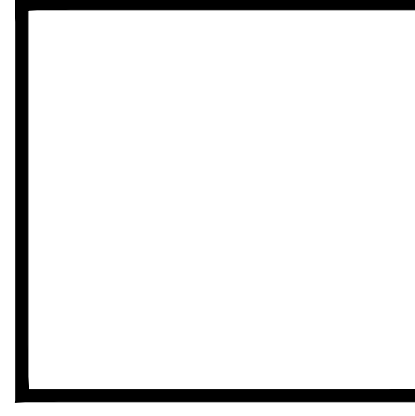
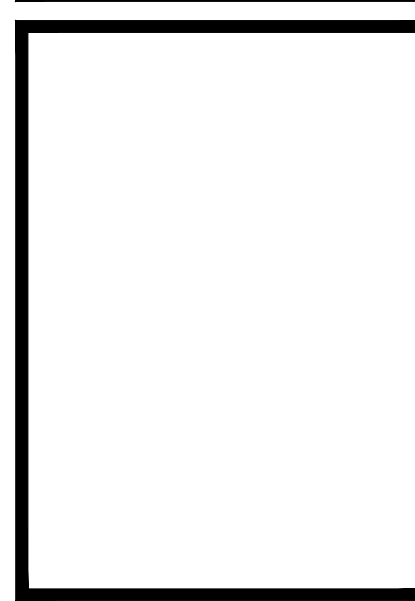
QTY.	SIZE	STYLE	CAT. NO.	JAMB	SWING	REMARKS
3	3'-0 3/4" x 6'-8"	PATIO DOOR	3680	6-9/16"	LH	
4	6'-0" x 6'-8"	FRENCH DOORS	7280	6-9/16"	ACT/PAS	

INTERIOR DOOR SCHEDULE 1

QTY.	SIZE	STYLE	CAT. NO.	JAMB	SWING	REMARKS
5	3'-0" x 6'-8"	SINGLE DOOR	----	6-9/16"	LH	FIRE RATED
6	2'-6" x 6'-8"	SINGLE DOOR	----	6-9/16"	SWING	BI-SWING
7	2'-8" x 6'-8"	SINGLE DOOR	----	6-9/16"	LH	
8	2'-6" x 6'-8"	POCKET DOOR	----	6-9/16"	NA	
9	2'-8" x 6'-8"	POCKET DOOR	----	6-9/16"	NA	
10	2'-0" x 6'-8"	SINGLE DOOR	----	6-9/16"	RH	BROOM CLOSET
11	3'-2 1/2" x 6'-8"	CLOSET SLIDER DOORS	----	6-9/16"	NA	
12	3'-0" x 6'-8"	SINGLE DOOR	----	6-9/16"	RH	
13	2'-0" x 6'-8"	STORAGE DOOR	----	6-9/16"	LH	FIRE RATED
14	4'-0" x 6'-8"	DOUBLE CLOSET DOORS	----	6-9/16"	RH/LH	
15	2'-6" x 6'-8"	SINGLE DOOR	----	6-9/16"	LH	

MAIN FLOOR AREA = 2,076 SF
 LOFT FLOOR AREA = 814 SF
 GAR. LOFT FLOOR AREA = 473 SF
 GAR. FLOOR AREA = 673 SF
 TOTAL AREA = 4036 SF

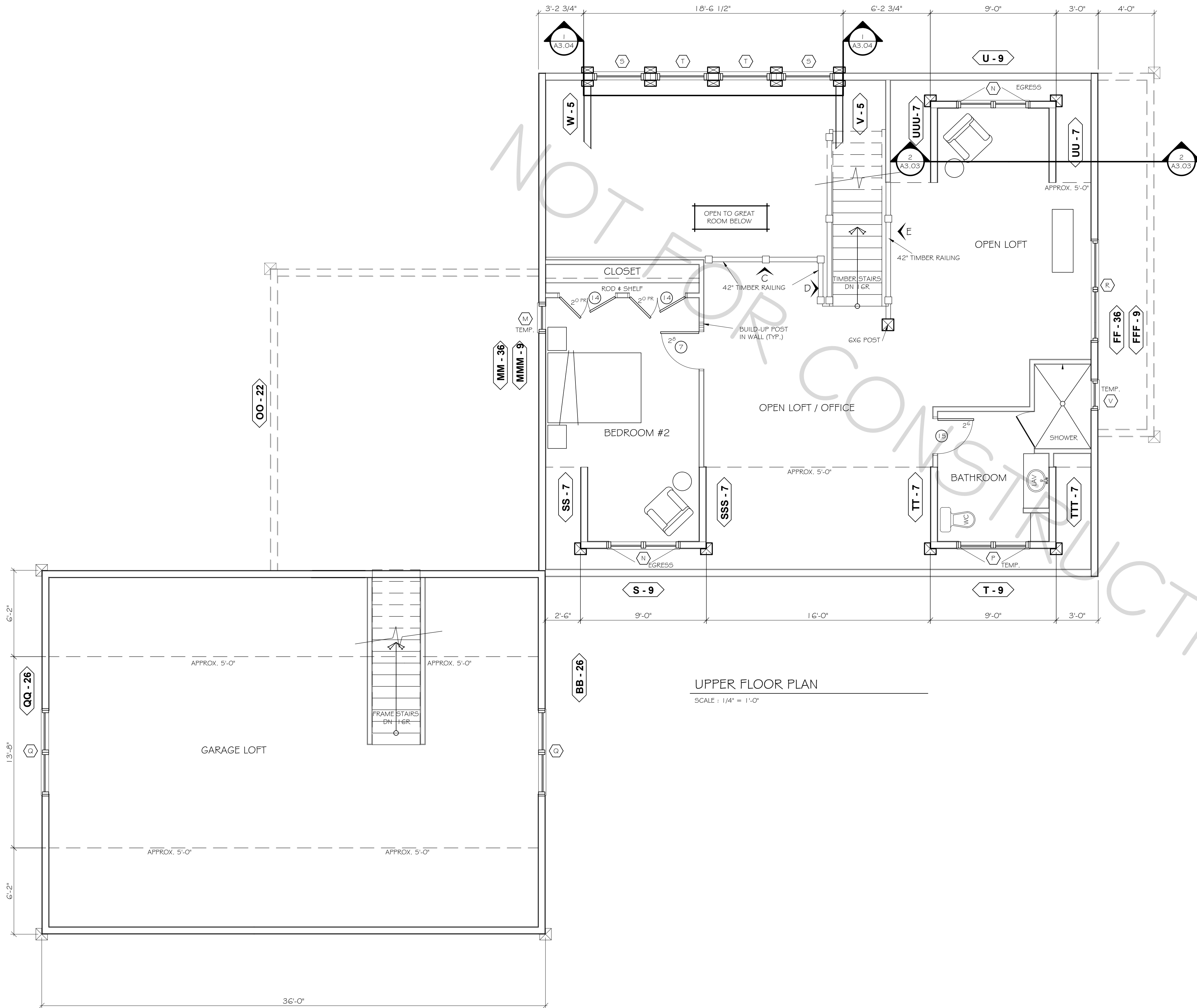
CONTRACTOR NOTE:
 THE SPECIFICATIONS WITHIN THIS PLAN SET ARE ACCURATE AS OF THE MOST RECENT DATE IN THE TITLE BLOCK. HOWEVER, IT SHALL BE THE CONTRACTOR'S RESPONSIBILITY TO CONFIRM AND VERIFY ALL SPECIFICATIONS w/ THE OWNER PRIOR TO CONSTRUCTION. R.M.L.H. ASSUMES NO RESPONSIBILITY FOR FAILURE TO PERFORM THE ABOVE.



DRAWN BY:	CB / CF
CHECKED BY:	MANAGER
DATE:	12/7/15
REVISIONS:	
REV.# 1:	1/8/16 JP
REV.# 2:	N/A
REV.# 3:	N/A
REV.# 4:	N/A
REV.# 5:	N/A
REV.# 6:	N/A

PROJECT NO:
#####

SHEET:
A1.01
MAIN FLOOR PLAN



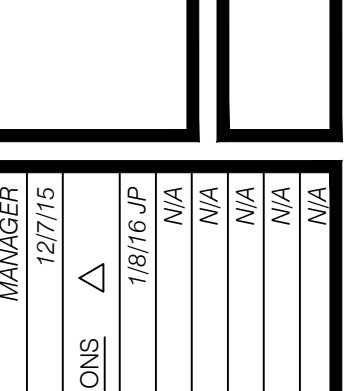
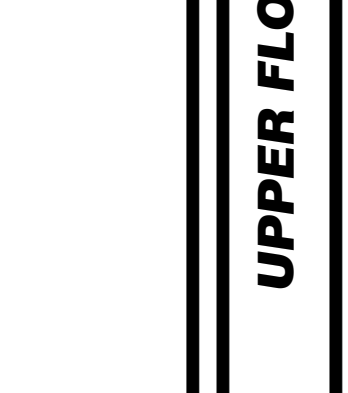
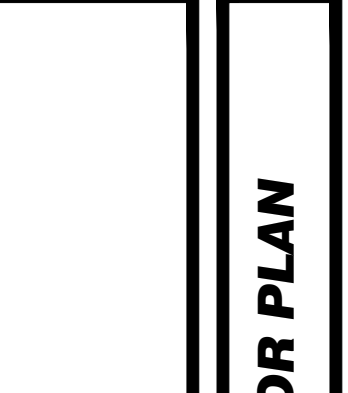
DOOR AND WINDOW SCHEDULES
 FOR DOOR AND WINDOW SCHEDULES SEE THE
 MAIN FLOOR PLAN ON A1.01

UPPER FLOOR PLAN
 SCALE : 1/4" = 1'-0"

CONTRACTOR NOTE:
 THE SPECIFICATIONS WITHIN THIS PLAN SET
 ARE ACCURATE AS OF THE MOST RECENT DATE
 IN THE TITLE BLOCK. HOWEVER, IT SHALL BE
 THE CONTRACTOR'S RESPONSIBILITY TO CONFIRM
 AND VERIFY ALL SPECIFICATIONS w/ THE OWNER
 PRIOR TO CONSTRUCTION. R.M.L.H. ASSUMES NO
 RESPONSIBILITY FOR FAILURE TO PERFORM THE ABOVE.



©2016 ROCKY MOUNTAIN
 HOMES, INC.
 ALL IDEAS, DESIGNS, ARRANGEMENTS, PLANS
 AND DRAWINGS PREPARED BY ROCKY
 MOUNTAIN HOMES, INC. INCLUDING THE
 COPYRIGHTS AND INSTRUMENTS OF SERVICE
 INTENDED FOR USE WITH THIS SPECIFIC
 PROJECT ONLY. THEY MAY NOT BE USED FOR
 ANY OTHER PURPOSES. THE OWNER,
 GENERAL CONTRACTOR, SUBCONTRACTOR,
 SUPPLIER OR ANY OTHER ENTITY MAY NOT
 REUSE OR PERMIT THE REUSE OF THESE
 DOCUMENTS. THEY MAY NOT BE DUPLICATED,
 COPIED, OR ALTERED IN ANY WAY WITHOUT
 THE EXPRESSED WRITTEN PERMISSION OF
 ROCKY MOUNTAIN HOMES, INC. THE
 ARCHITECT OR DESIGNER AND ROCKY
 MOUNTAIN HOMES, INC. AND EMPLOYEES OF
 THE ARCHITECT OR DESIGNER SHALL NOT BE
 HELD LIABLE FOR CONSTRUCTION METHODS
 AND MEANS OF CONSTRUCTION OR OMISSION
 OF ELEMENTS WHICH ARE NECESSARY AND
 ARE REASONABLY IMPLIED BY THESE
 DOCUMENTS AND SPECIFICATIONS.



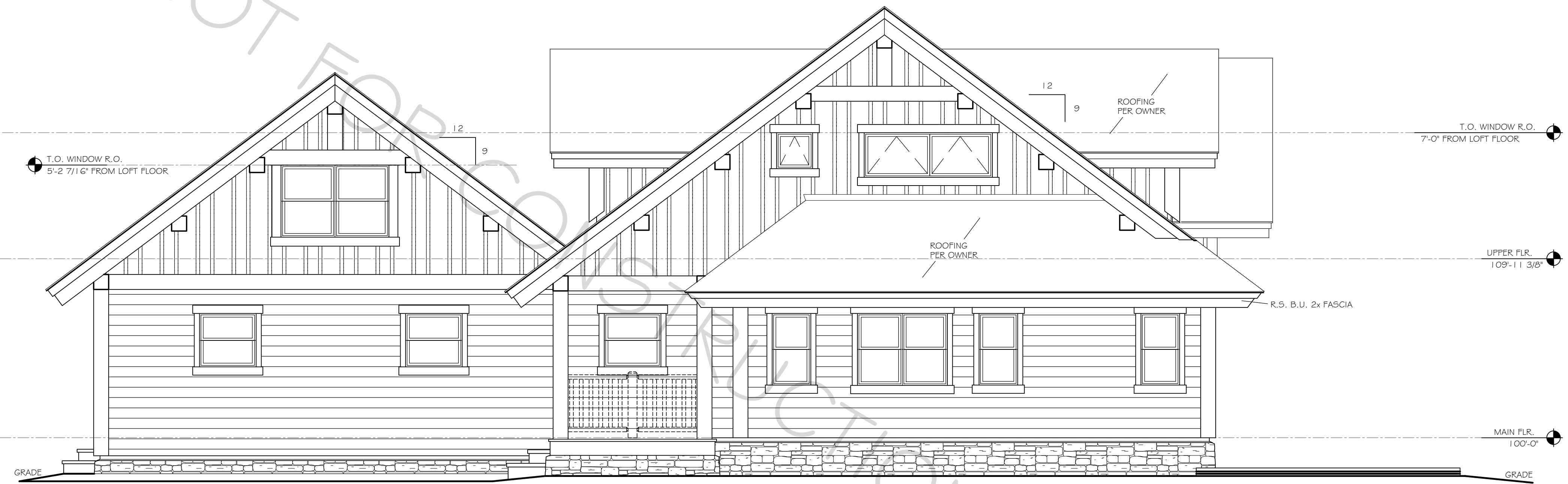
DRAWN BY:	CB / CF
CHECKED BY:	MANAGER
DATE:	12/7/15
REVISIONS:	1/8/16 JP
REV.# 1:	N/A
REV.# 2:	N/A
REV.# 3:	N/A
REV.# 4:	N/A
REV.# 5:	N/A
REV.# 6:	N/A

PROJECT NO:
 #####

SHEET:
A1.02
UPPER FLOOR
PLAN



Whisper Creek



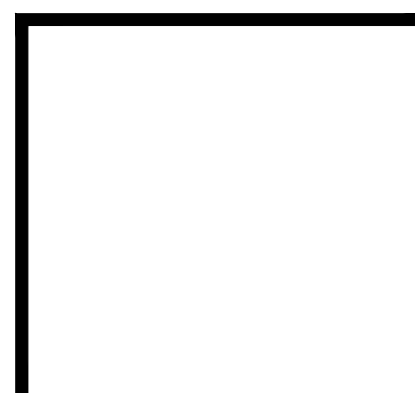
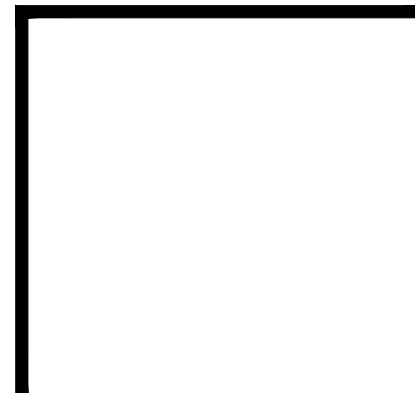
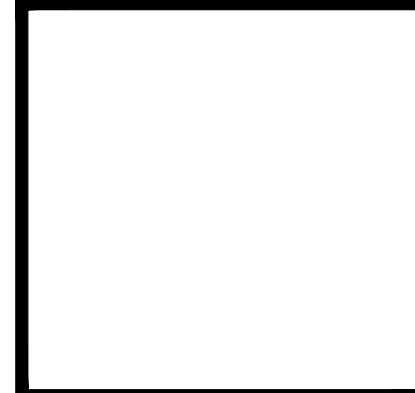
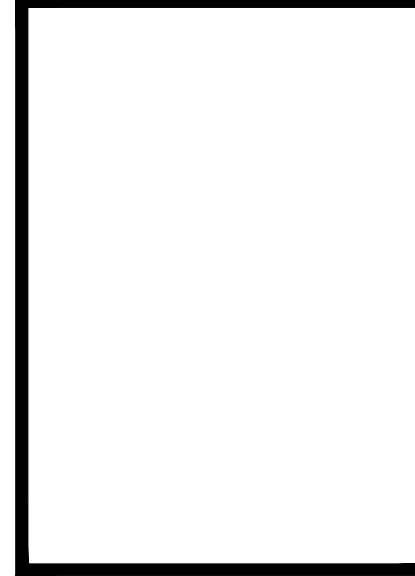
RIGHT SIDE ELEVATION

SCALE : 1/4" = 1'-0"



LEFT SIDE ELEVATION

SCALE : 1/4" = 1'-0"



EXTERIOR FRONT & REAR ELEVATIONS

DRAWN BY:	CB / CF
CHECKED BY:	MANAGER
DATE:	12/7/15
REVISIONS:	
REV.# 1:	1/8/16 JP
REV.# 2:	N/A
REV.# 3:	N/A
REV.# 4:	N/A
REV.# 5:	N/A
REV.# 6:	N/A

PROJECT NO:
#####

SHEET:
A2.01
EXTERIOR
ELEVATIONS
OF: 04